

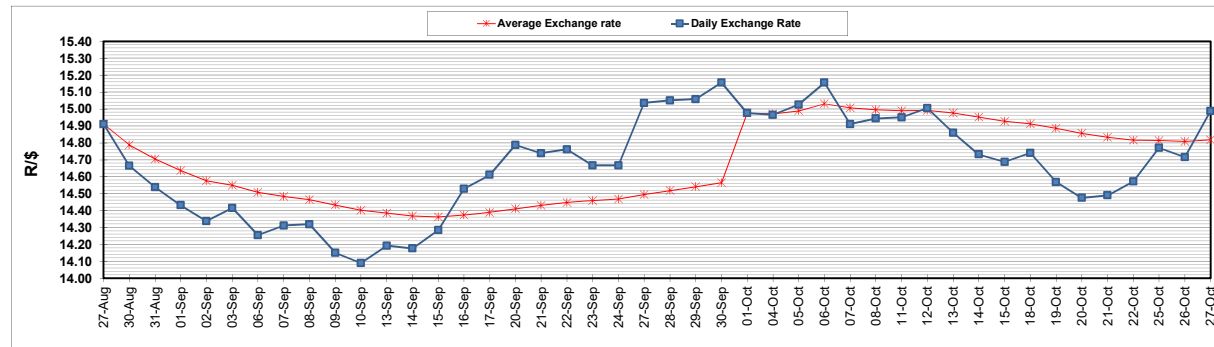
	PETROL 95 ULP	PETROL 93 ULP & LRP	DIESEL 0.05%	DIESEL 0.005%	ILL. PAR.
GAUTENG PUMP PRICE (SA c/l) AS FROM 06/10/2021	1,833.000	1,811.000	-	-	-
WHOLESALE PRICE (SA c/l) AS FROM 06/10/2021	-	-	1,571.780	1,575.180	980.488
SINGLE NATIONAL MAXIMUM RETAIL PRICE	-	-	-	-	1,240.000
BASIC FUEL PRICE - 27/10/2021 (SA c/l)	993.389	971.335	932.312	936.224	927.106
PRESS RELEASE CONTRIBUTION TO BFP 06/10/2021 - 27/10/2021 (SA c/l)	818.310	806.310	771.630	775.030	767.128
UNIT OVER/(UNDER) RECOVERY - 27/10/2021 (SA c/l)	(175.079)	(165.025)	(160.682)	(161.194)	(159.978)
AVERAGE BASIC FUEL PRICE 01/10/2021 - 27/10/2021	936.439	918.915	912.712	916.365	906.548
AVERAGE UNIT OVER/(UNDER) RECOVERY 01/10/2021 - 27/10/2021	(118.318)	(112.321)	(145.029)	(145.282)	(144.473)

ANALYSIS MOVEMENT OF AVERAGE OVER/(UNDER) RECOVERY

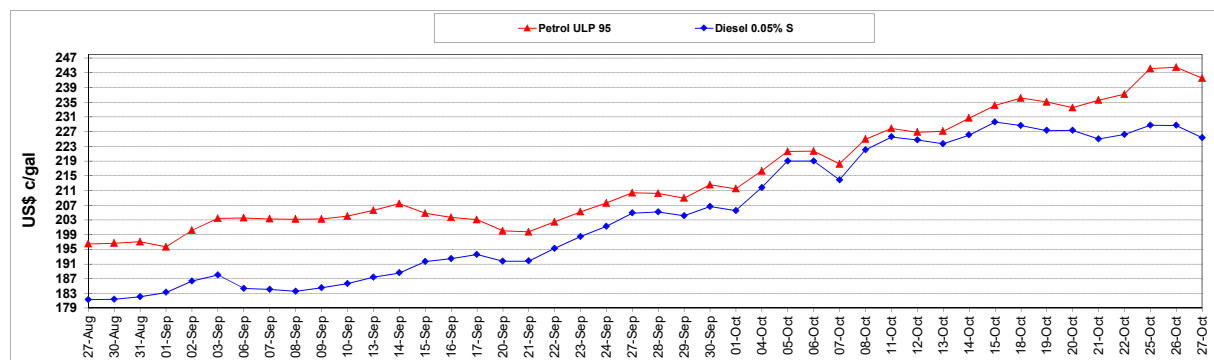
	PETROL 95	PETROL 93	DIESEL 0.05%	DIESEL 0.005%	ILL. PAR.
- MOVEMENT IN INTERNATIONAL PRODUCT PRICES	(102.386)	(96.687)	(129.500)	(129.691)	(129.049)
- MOVEMENT IN EXCHANGE RATE	(15.932)	(15.634)	(15.529)	(15.591)	(15.424)
AVERAGE UNIT OVER/(UNDER) RECOVERY 01/10/2021 - 27/10/2021	(118.318)	(112.321)	(145.029)	(145.282)	(144.473)

R/\$ EXCHANGE RATE - (R/\$14.9875 - 27/10/2021)

EXCHANGE RATE USED IN BASIC FUEL PRICE



INTERNATIONAL PRODUCT PRICES OF BASKET USED IN BASIC FUEL PRICE



BASIC FUEL PRICE IN SA CENTS PER LITRE

